

ATALIS

General Information Management

Everything a controller needs to know...
... at fingers' tips.

How to access accurate and up to date information?

Controllers must be aware of various kind of information that can be updated at any time. This information is of paramount importance to manage the movements in a safe way that takes into account a complex environment.

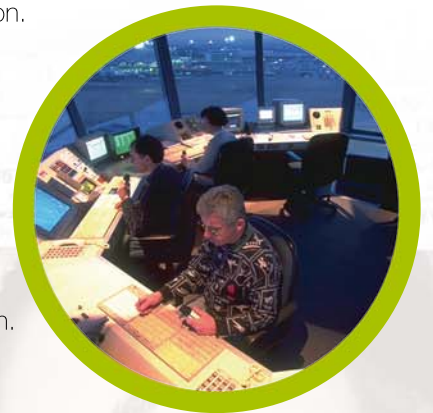
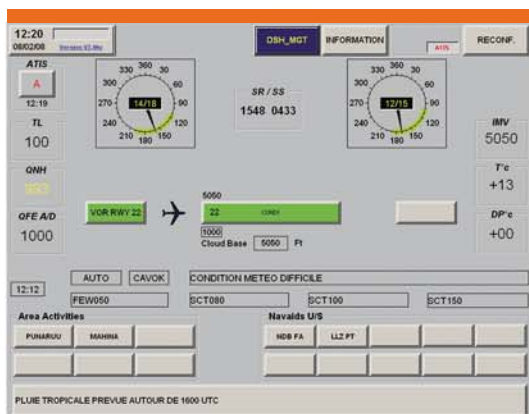
ATALIS General Information Management is the answer.

ATALIS General Information Management provides all relevant information to Tower or Approach controllers and it participates to ensure the security and the controlled airspace management.

ATALIS General Information Management display airport observation meteorological data and alarms, real-time status of devices, procedures in force and restrictions, AFTN related information and all useful local airport information.

Highlights

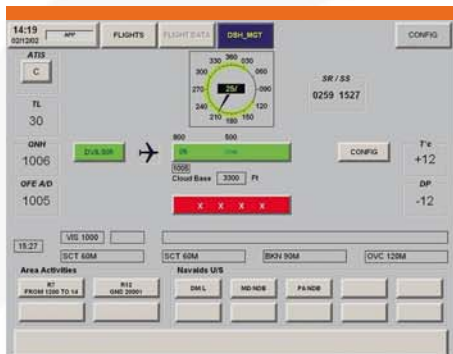
- Graphical interface fully designed for touch-screens usage. On screen keyboard when manual entry is required.
- Highly configurable to fit local requirements.
- Direct access to frequently used information through preprogrammed button.
- Possibility to share display with **ATALIS** Flight Movement Management.
- Web based architecture for internet/intranet access.



Main features ...

Local Synthesis screen:

- Meteorology information (Wind indicator, Transition Level, QNH, QFE, IMV, REF TEMP, Dew Point, RVR, cloud base),
- RWY(s), QFU(s) & procedure in use,
- SR/SS,
- Area Activities,
- Navaid Status and procedure status impact,
- Airfield Ground Lightning System
- Customizable synthesis screen for local requirements. Data update can be manual from supervisor position or automated if interfaces to AWOS (DIFNA) and/or Navaid supervision are available.

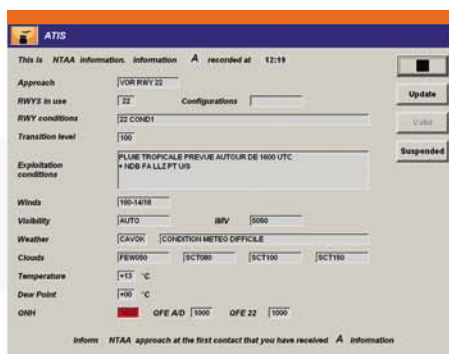


General Information:

- AFTN messages,
- Daily news,
- NOTAM and PIB,
- SR/SR calculation (from lat/long or ICAO location)
- SID/STAR or Meteorological charts from any sources,
- Events,
- Call-out procedures and directories (phone, fax, ...)

ATIS Management

- ATIS letter
- Data obsolescence and inconsistency alarms
- Vocal synthesis and Datalink broadcast



www.egis-avia.fr

<http://atalis.sofreavia.fr>

e-mail : atalis2-contact.egis-avia@egis.fr

Paris Office: 3, carrefour de Weiden - 92441 Issy-les-Moulineaux Cedex - France
Phone: + 33 1 41 23 46 00 - Fax: + 33 1 46 38 29 54

Toulouse Office: 4 bis, rue Paul Mesplé - BP 20603 - 31106 Toulouse Cedex 1 - France
Phone: + 33 5 62 24 56 00 - Fax: +33 5 62 24 49 64